

OFFSHORE SUBSEA CONSTRUCTION VESSEL

OSCV NG SUPPORTER



The NG SUPPORTER is a versatile Offshore Subsea Construction Vessel (OSCV) designed and equipped for subsea operation duties such as construction and installation works, inspection and maintenance.

The vessel is of clean design, environmental friendly with focus on low fuel consumption through its hull shape and diesel electric machinery. The design is of type OSCV 11L.

With her optimized hull form and bow shape optimized for all weather conditions, together with the specified propulsion configuration, the vessel has particularly good seakeeping abilities, station keeping performance and is able to keep a high transit speed.

MAIN SERVICES/DUTIES:

- Subsea Light Construction & Installation Work
- Subsea Light Maintenance Work
- Subsea Inspection Work

THE VESSEL IS FITTED WITH:

- ROV hangar
- Offshore crane
- Work moonpool
- Helideck
- High standard accommodation for 110 pax with low noise



VESEL SPECIFICATIONS

GENERAL INFO

Vessel Name	NG SUPPORTER
Builder	Vard Brattvaag, Norway
Year of Build	2013
Flag	Cyprus
IMO	9660102
Call sign	5BXQ3
Classification	DNV or similar IACS: DNV *1, E0, DYNPOS-AUTR DK(+), HELDK, ICE-1B, (hull only), ICE-C, SF, BIS, CLEAN DESIGN, RECYCLABLE, NAUT-AW, Comf-V(3)-C(3), SPS Resolution MSC.266(84), Code of Safety for special purpose ships, 2008 IMO/SOLAS
Performance	Vessel trial speed at d=4.5m to be approx 15.5 kn in calm weather & clean hull Station keeping: ERN 99.99.99.99

MAIN PARTICULARS

Length Overall	120.80 m
Length between P.P.	110.80 m
Breadth moulded	22.00 m
Depth main deck lightship	9.00 m
Max load line draft	6.6 m

CAPACITIES

Max. dock cargo capacity will occur at draught less than the vessel's max. draught

Fuel Oil	1396.8 m ³
Fresh water	660 m ³
MEG	310 m ³
Water ballast/ Drill water	5292.4 m ³
Deck cargo	3100 TCOG = 1m a.d.
Cargo deck area	1300 m ² (Free area - 10 t/m ² aft of frame 87) 5 t/m ² fwd of frame 87
Deadweight	5110 t

VESSEL SPECIFICATIONS

HEELING PUMP / SYSTEM

Two of water ballast heeling pumps, with capacity 1500 m³/h each

SIDE THRUSTERS

2x El. Driven side thruster forward: 1900 kW, freq. controlled

1x El. Driven swing-up thruster forward: 1500 kW, freq. controlled

ROLL REDUCTION SYSTEM

2x Passive roll reduction tank (Stabilizer)

JOYSTICK

Joystick system for integrated manoeuvre control of azimuth propellers and side thrusters

DP II SYSTEM

The vessel to be equipped with DP II (Dynpos AUTR) system according to specified class, incl. following position ref. systems:

- 1x 1000m Range Laser Positioning System
- 2x Hydroacoustic Position Reference System (HPR)
- 1x Radius 1000D Reference System

REFERENCE SYSTEMS

The vessel to be equipped with the following reference systems:

- DPS 132 + 232
- HiPAP 500 x2
- Radius 750x2 + 550x1
- CyScan 1000 m
- 2x MRU 5
- 1x MRU D
- 3x wind sensors
- 1x deepwater echosounder 4000m
- 3x Ships gyro compass

NAVIGATION SYSTEM

The vessel to be equipped with an integrated bridge system according to specified requirements and regulations

COMMUNICATION SYSTEM

Communication equipment according to GMDSS requirements for Area 3 operation with equipment duplication and shore maintenance utilised to assure availability. Sufficient internal communication systems.

SAFETY EQUIPMENT

The vessel to have safety equipment according to SOLAS and flag state requirements

- 4x Lifeboats (2x90P + 2X22P) with davit according to SOLAS (100% capacity each side)
- 1x MOB boats with el. Hydraulic davit SOLAS approved
- 2x Life rafts (25P Each) one per side SOLAS approved

VESSEL SPECIFICATIONS

ACCOMMODATION

The vessel has accommodation and equipment for 110 persons.

- 4x Single cabins – State cabin
- 9x Single cabins – Officer cabin
- 21x Single cabins – Crew cabin
- 38x Double cabins – Crew cabin
- Each cabin has direct access to private toilet (shower, WC and wash basin)
- All accommodation fully air-conditioned for worldwide operations based on chilled water system
- Sewage treatment plant



MAIN PROPELLERS

2x Azimuth thrusters. Power: approx 3000kW each. El. driven frequency controlled propellers & water cooled drives

GENERATORS

Generator	Quant.	Capacity ekW	Voltage V	Freq. Hz	Rpm	Prime mover
Main generators	4x	2880	690	60	720	Main diesel engine
Harbour generator	1x	970	690	60	1800	Harbour diesel engine
Emergency generator	1x	201	690	60	1800	Emergency diesel engine

ELECTRICAL SYSTEM

Alternating current system, 3 phase, 60 Hz for the general el. system according to DIN and /or IEC norms

System voltages: 690V AC, 440V AC, 230V AC and 24V D

VESEL SPECIFICATIONS

MOONPOOL

The vessel is fitted with a work moonpool of 7.2 x 7.2 m. The moonpool is fitted with baffle zones in order to get optimized sea damping capability.

ROV HANGAR

The vessel is equipped with a hangar aft of the accommodation for the installation of:

- 1x Overside LARS 15t/3000m AHC
- 1x Moonpool LARS 15t/3000m AHC

DECK CRANE

- 1x Deck/provision crane 3.0t 15m
- 1x Foldable crane for equip. handling in ROV hangar 1t 16m

OFFSHORE CRANE

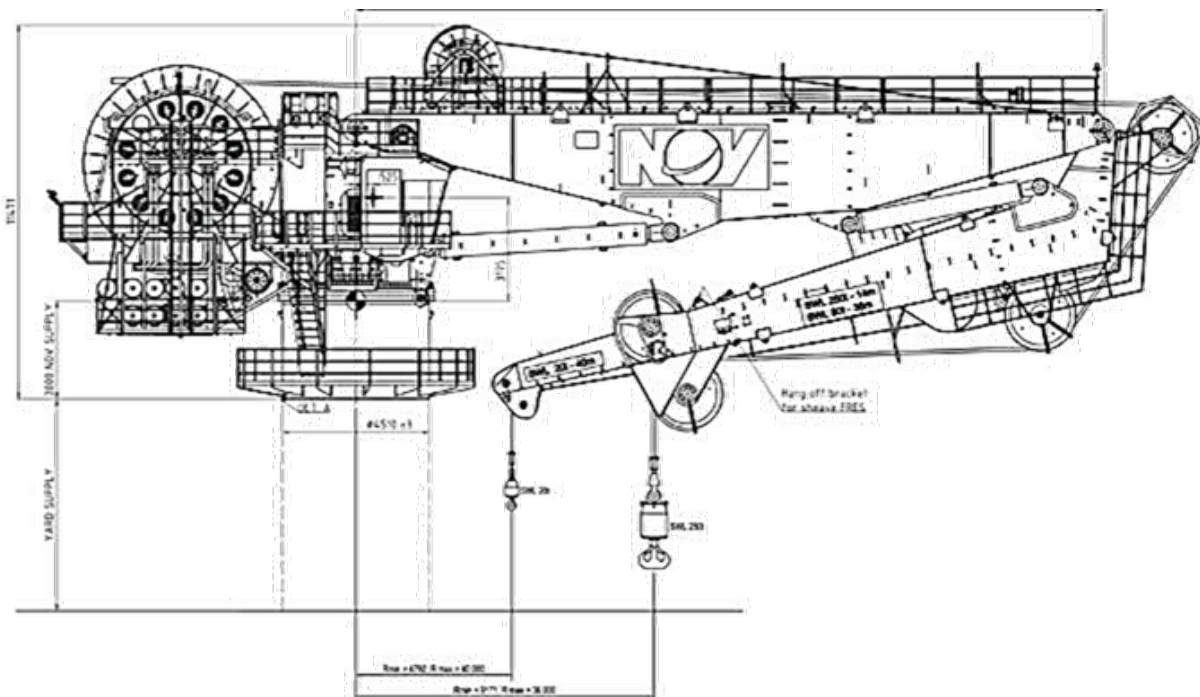
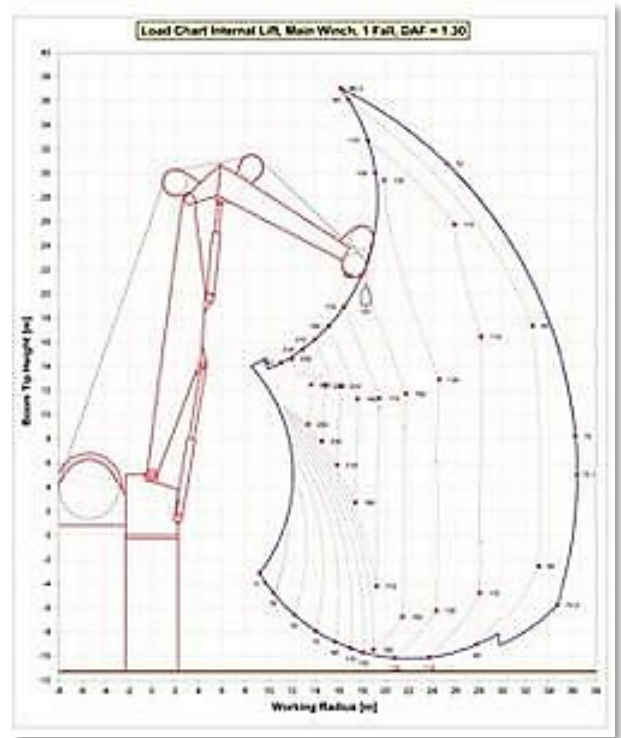
- 1x SWL 250 tons main line -14m AHC, 20 tons whip line 40m AHC, knuckle-boom offshore crane, depth cap. 3000m
- Man riding 10t/38m on whipline

HELIDECK

The vessel is equipped with a helideck, dia. 29 m suitable for Sikorsky S-92, holding DNV-class "HELDK-SH".

DECK MACHINERY

- 2x Mooring winches aft, 10t each
- 2x Windlass with cable lifters, warping ends & drums
- 2x Hydraulic/electric operated mooring platform



VESEL SPECIFICATIONS

MACHINERY SYSTEMS

- 4x F.O. service tanks
- 1x F.O. settling tanks
- 3x F.O. transfer pumps
- 2x W.B. pumps
- 2x F.W. pumps
- 2x F.O. separator, automatic self-cleaning type
- 2x L.O. transfer pumps
- 4x L.O. separator, automatic self-cleaning type
- 2x Hydraulic oil transfer pumps
- 2x MEG pumps
- 2x SW cooling pumps for deck equipment

COOLING SYSTEMS

- Cooling systems based on central cooling system. One separate cooling system for each engine according to supplier's recommendation.
- 2x Starting air compressors
 - 2x Starting air bottles
 - 2x Working/instrument air compressor
 - 2x Bilge pumps
 - 4x Fire pumps (including Helideck fire pump)
 - 1x Bilge water separator
 - Water mist fire fighting system in engine room
 - Ballast treatment system

